



STANDING DESK WORKSTATION

The Paragon Standing Desk is a sturdy, standing-height workstation designed for classrooms, maker spaces, libraries & other learning spaces. Paired with an Emoji or Ready Adjustable Stool, this is the ideal sitting or standing solution for education environments.

HOW TO SPECIFY

Paragon Standing Desks are designed & manufactured specifically for education environments. They are flexible, functional, durable & look great, too!

FEATURES

○ SURFACE/EDGE

1-¼" High Pressure Laminate surface with machine applied durable edge band.

○ COLOR OPTIONS

Multiple frame paint options with your choice of standard laminate colors for top surface.

○ FRAME

Fixed-height, double-post steel legs for increased stability with reinforced steel top support.

○ OPTIONS

Laptop Shelf/Book Rack can be added as an optional accessory.

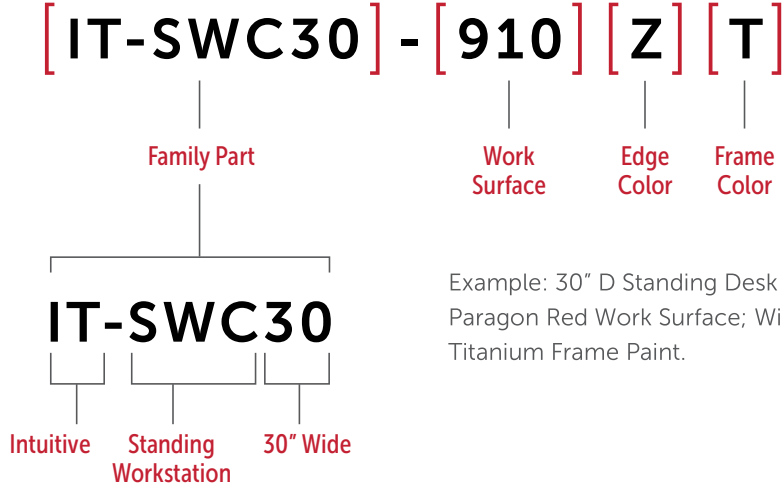
○ CABLE MANAGEMENT

Work surface features a cut out in the back that enables cables to travel down a chase that is integrated into the modesty panel.



CONFIGURING A MODEL NUMBER

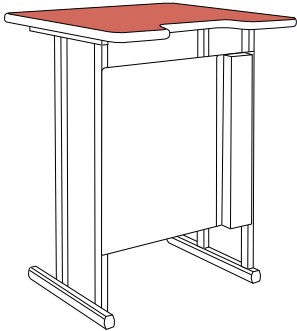
Choose your family part. Refer to the price list for a list of Standing Desk Workstation table models. In this example, we used part **IT-SWC30-910ZT**. The structure of this new part number can be broken up with parenthesis like this:



COLOR & FINISH OPTIONS

STEP 1 WORK SURFACE

Use the number next to the laminate name as the key code for **STEP 1**



[FAMILY PART] - [WORK SURFACE]

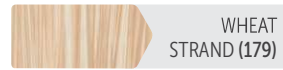
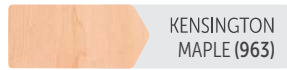
SOLID LAMINATE

| | | | |
|-------------------|-------------------|---------------------|----------------------|
| PARAGON RED (910) | EARTH (185) | FROST (918) | CITADEL (303) |
| MARS (743) | STORM (770) | NEUTRAL WHITE (123) | NORTH SEA GRAY (535) |
| CLEMENTINE (852) | BLACK (900) | FASHION GRAY (366) | PLUM (736) |
| ISLAND (229) | COWBOY BLUE (976) | FOLKSTONE (902) | ORANGE GROVE (233) |

WHITEBOARD LAMINATE



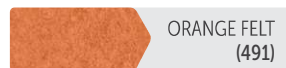
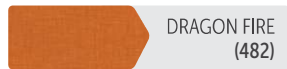
WOOD GRAIN LAMINATE



PATTERN LAMINATE



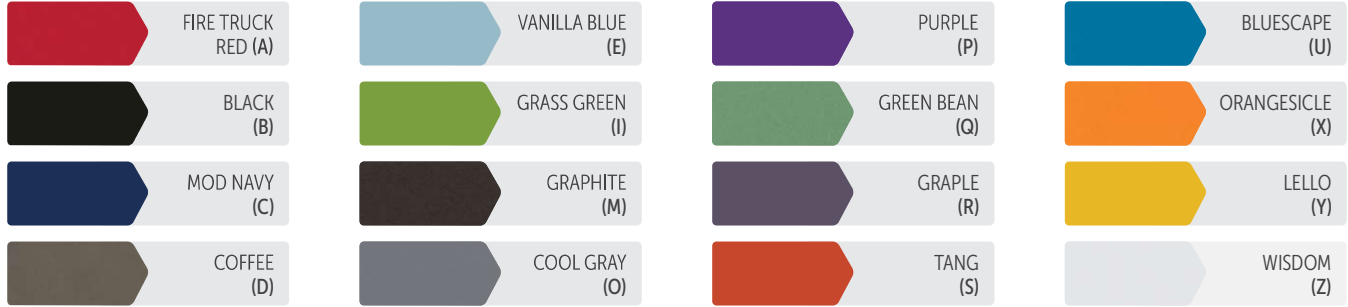
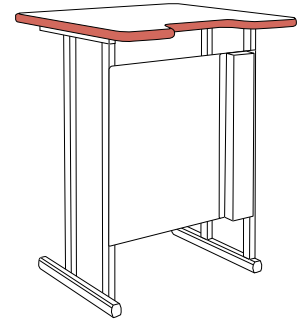
NEW COLORS



STEP 2 EDGE

Use the letter next to the color name as the key code for **STEP 2**

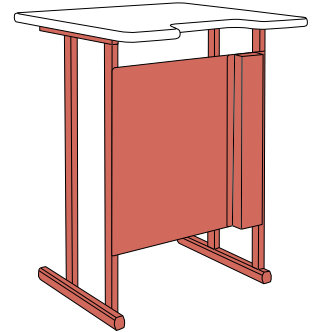
[FAMILY] - [WORK SURFACE] [EDGE COLOR]



STEP 3 FRAME

Use the letter next to the color name as the key code for **STEP 3**

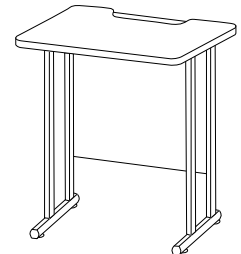
[FAMILY] - [WORK SURFACE] [EDGE COLOR] [FRAME COLOR]



MODEL NUMBERS & PRODUCT SPECS

STANDING DESK WORKSTATION

| Model # | Width (in) | Depth (in) | Height (in) | Weight (lbs) | Freight Class (Qty 1) |
|----------|------------|------------|-------------|--------------|-----------------------|
| IT-SWC30 | 30 | 30 | 39 | 85 | 85 |
| IT-SWC42 | 42 | 30 | 39 | 90 | 85 |



ACCESSORIES

| Model # | Width (in) | Depth (in) | Height (in) | Weight (lbs) | Freight Class (Qty 1) |
|---------|------------|------------|-------------|--------------|-----------------------|
| SR814 | 10 | 18 | 8 | 15 | 85 |

