

Paragon Furniture 800-451-8546

AND CROSSFIT FLIP BULK BACKED ASSEMBLY INSTRUCTIONS



Hardware

3/4" Flat Head Wood screws - Qty

Varies by length of table

5/8" Pan Head Screws - 13 per table

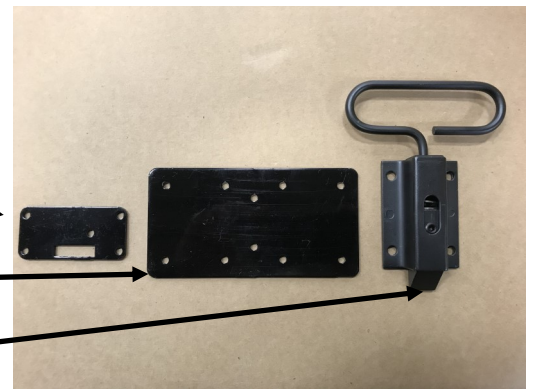
3/4" Pan Head Screws - 8 per table



Lock Latch Plate - 1 per table

Pull Latch plate - 2 per table

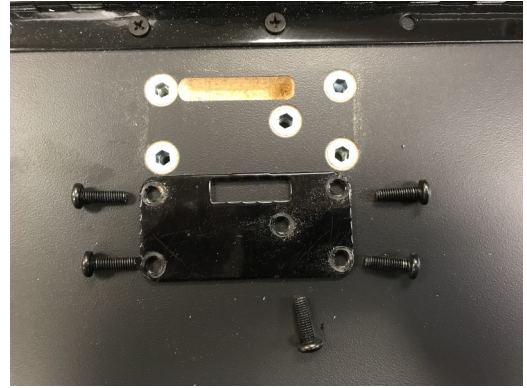
Pull latch - 2 per table



Dually Casters - 4 per table

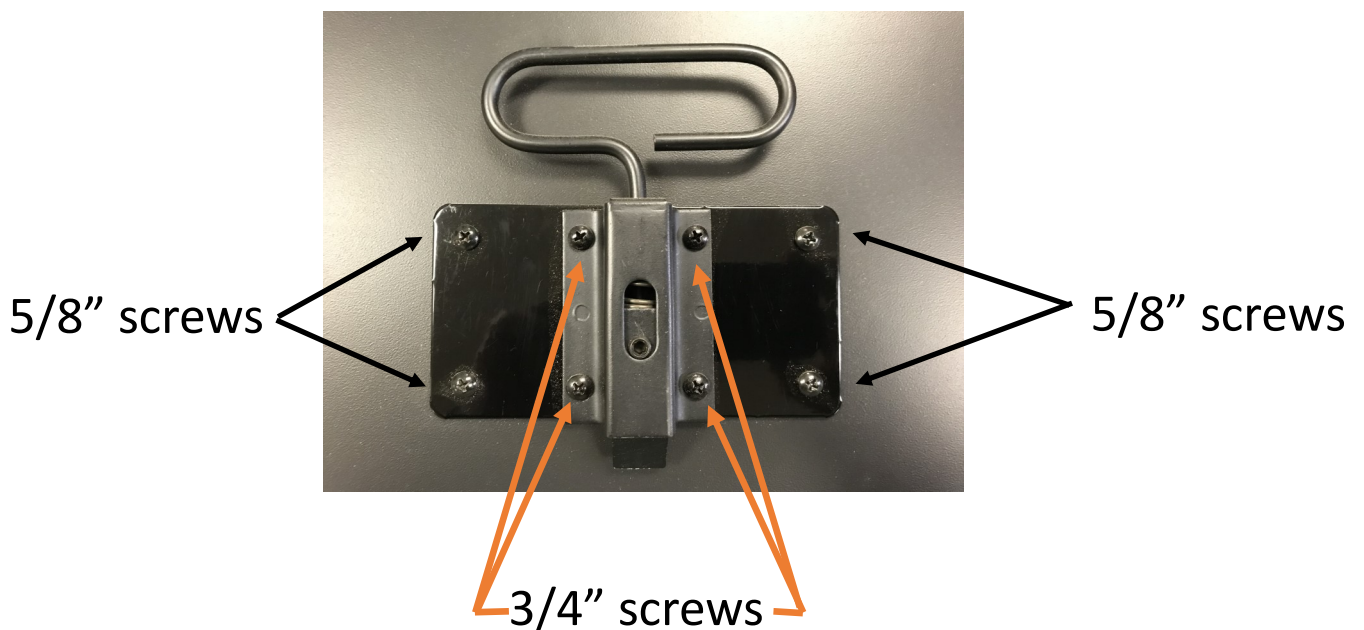


STEP 1: Install Lock Latch Plate
(Qty) 5. 5/8" Pan Head Screws



STEP 2: Install Pull Latch Plate
(Qty 4). 5/8" Pan Head Screws
in 4 outside corners

STEP 3: Install Pull Latch (Qty)
4. 3/4" Pan Head Screws



STEP 4: Place Frame onto table tops screw the Piano Hinge down using 3/4" Flat Head screws.

Note: You will not use every hole; only install screws where there are pre-drilled holes in the wood top.



STEP 5: Install 4 Dually Casters; tighten with 1/2" wrench

